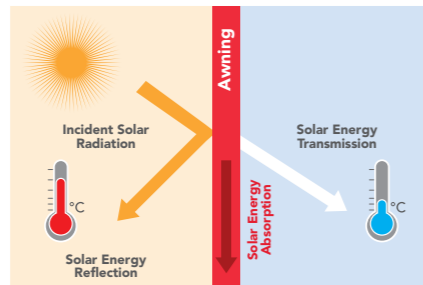


SUNWORKER: An ultra high-tech fabric

Absolute Heat Shield

SUNWORKER fabrics are fully in line with the drive towards sustainable development and energy savings. Thanks to its highly regular, perforated micro-structure, the fabric acts as a genuine heat filter. It repels up to 92% of the warmth of the sun's rays, thus avoiding any greenhouse effect and preventing buildings from overheating in summer. In winter, the process is reversed, thus maintaining heat within the building.



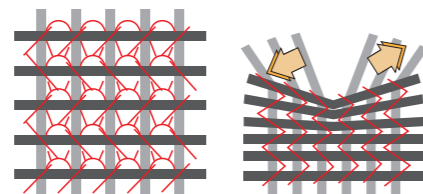
Optimal Visual Comfort

By choosing a SUNWORKER fabric, you can control the sun's glare while maintaining a clear view* towards the outside and still preserve your privacy... So you can see without being seen!

*except Sunworker Opaque and Cristal

Mechanical Strength

The "heart" of Sunworker is made up of a high-strength polyester core, while the distinctive Rachel Trameur-style weaving method used in its manufacture gives it outstanding resistance to bad weather. This technique allows the threads to move in relation to each other in order to spread, transmit and absorb mechanical energy in the event of tearing.



Behaviour under normal conditions

Behaviour under tearing

Stay-true Colours & Easy Maintenance

The Lowick System blocks the capillarity effect so the fabric's absorption of water is very limited. Sunworker fabrics are therefore more durable and stand up to even the most extreme weather conditions. The pigments used allow the colours to keep all their brilliance under the effects of the sun's rays.



Maximum Safety

All SUNWORKER fabric is guaranteed fire-retardant. As a result, it suits all types of projects: restaurants, hotels, shops, housing, commercial and public buildings, etc.



Colour N°	THERMAL AND LIGHT PERFORMANCES													Colour equivalents	
	According to ISO9050 norm						According to EN14501 norm							NCS	RAL
	gtot ext*	gtot int*	ST	SR	SA	VT	gtot ext*	gtot int*	Glare control	Night privacy	Visual contact with the outside	Daylight utilisation			
M525	0,21	0,41	0,29	0,49	0,22	0,25	2	1	1	1	0	2	S1020-G20Y	6019	
M567	0,10	0,53	0,09	0,09	0,82	0,07	3	0	1	1	2	1	S6030-B50G	6004	
M238	0,15	0,44	0,20	0,38	0,42	0,08	2	1	3	2	2	1	+/- S2050-R80B	+/- 5024	
M228	0,14	0,50	0,13	0,21	0,66	0,05	3	0	3	2	2	1	S6020-R60B	5013	
M711	0,15	0,41	0,21	0,50	0,29	0,18	2	1	1	2	1	2	1005-Y20R	+/- 1015	
M713	0,15	0,42	0,21	0,38	0,41	0,18	3	1	1	1	2	2	S2020-Y30R	1001	
M709	0,16	0,39	0,22	0,56	0,22	0,16	2	1	1	2	1	2	S030-Y20R	+/- 1017	
M309	0,22	0,42	0,31	0,45	0,24	0,27	2	1	1	2	0	2	S0580-Y10R	1018	
M005	0,16	0,36	0,23	0,66	0,11	0,21	2	1	1	2	0	2	S052-Y	+/- 9010	
M710	0,17	0,38	0,25	0,57	0,18	0,23	2	1	1	2	1	2	S1005-Y	+/- 1013	
M712	0,15	0,42	0,20	0,47	0,33	0,16	2	1	0	1	1	2	S2010-Y	+/- 7032	
M654	0,11	0,41	0,14	0,47	0,39	0,11	3	1	1	2	1	1	S1002-G	+/- 7047	
M653	0,10	0,46	0,12	0,35	0,53	0,10	4	1	1	2	1	1	S3005-R50B	7045	
M652	0,09	0,48	0,08	0,24	0,68	0,07	4	1	3	2	2	1	S4502-B	+/- 7046	
M927	0,20	0,47	0,27	0,31	0,42	0,09	3	1	3	2	2	1	S2060-R	+/- 3027	
M838	0,13	0,53	0,09	0,13	0,78	0,06	3	0	3	2	2	1	S5030-R	3004	
M392	0,08	0,53	0,06	0,07	0,87	0,05	4	0	3	2	2	1	S7502-B	+/- 7016	
M393	0,09	0,53	0,07	0,08	0,85	0,06	4	0	3	2	2	1	S6502-N	8019	
M391	0,09	0,54	0,06	0,05	0,89	0,06	4	0	3	2	2	1	S8500-N	7021	
M654**	0,09	0,46	0,05	0,35	0,60	0,05	4	1	3	2	2	1	S3502-B	9022	
M652**	0,09	0,46	0,05	0,35	0,60	0,05	4	1	3	2	2	1	S3502-B	9022	
M711	0,14	0,41	0,17	0,50	0,34	0,14	3	1	1	2	1	2	1005-Y20R	+/- 1015	
M709	0,16	0,40	0,22	0,54	0,24	0,15	2	1	1	2	1	2	S030-Y20R	+/- 1017	
M005	0,17	0,37	0,24	0,63	0,14	0,22	2	1	1	2	0	2	S052-Y	+/- 9010	
M710	0,17	0,39	0,23	0,57	0,20	0,22	2	1	1	2	0	2	S1005-Y	+/- 1013	
M712	0,13	0,42	0,14	0,47	0,39	0,11	3	1	1	2	1	2	S2010-Y	+/- 7032	
M654	0,13	0,43	0,15	0,44	0,42	0,12	3	1	1	2	1	2	S1002-G	+/- 7047	
M652	0,10	0,49	0,07	0,25	0,68	0,06	3	1	2	2	2	1	S4502-B	+/- 7046	
M711	0,02	0,38	0,00	0,56	0,44	0,00									
M709	0,02	0,36	0,00	0,62	0,38	0,00									
M005	0,02	0,34	0,00	0,70	0,30	0,00									
M710	0,02	0,35	0,00	0,66	0,34	0,00									
M712	0,03	0,39	0,00	0,52	0,48	0,00									
M654	0,03	0,40	0,00	0,50	0,50	0,00									
M652	0,04	0,48	0,00	0,25	0,75	0,00									

The EN14501 norm specifies classifications about the performances of solar protection devices to quantify thermal comfort on the one hand and visual comfort on the other hand. It is the document of reference for the evaluation of the solar protection devices at the european level.

Legend EN14501 norm

Class	gtot*	Influence
4	gtot < 0,1	Very good effect
3	0,10 ≤ gtot < 0,15	Good effect
2	0,15 ≤ gtot < 0,35	Mild effect
1	0,35 ≤ gtot < 0,50	Poor effect
0	gtot ≥ 0,50	Very poor effect

ST: Solar Transmission / SR: Solar Reflection
SA: Solar Absorption / VT: Visual Transmission

* gtot: solar factor of the combination of fabric + reference glazing C (double glazing 4 + 16 + 4 with a low emission on side 3, Argon filling ; U=1,2 W/m2K ; g=0,59)

** Values for the metal face exposed towards the exterior



TECHNICAL TEXTILES
for solar protection



10 rue des Châteaux
BP 109 - Z.I. La Pilaterie
59443 Wasquehal Cedex - France
www.dickson-constant.com
Tél. +33 (0)3 20 45 59 59
Fax +33 (0)3 20 45 59 00

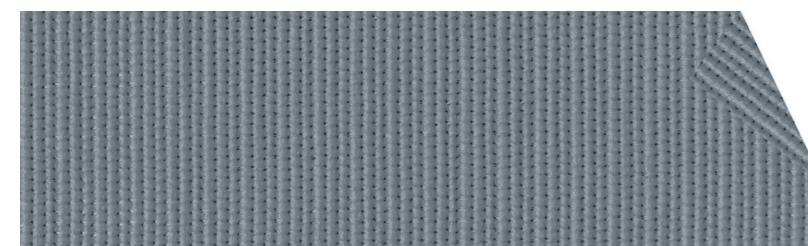
Performance fabrics for
solar protection
outdoor furniture
indoor furniture
marine furnishing
flooring



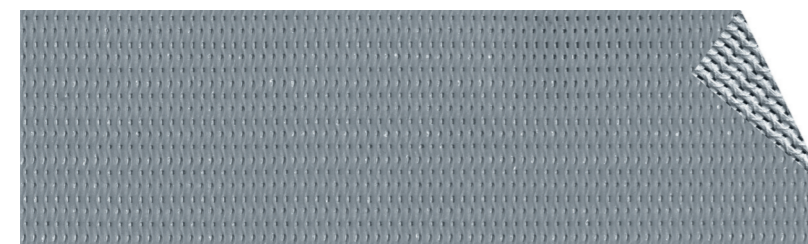


Marguerite>Yourcenar library - Paris

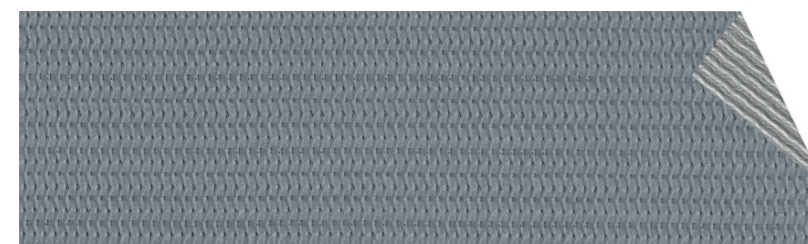
SUNWORKER: Fabric for all types of needs



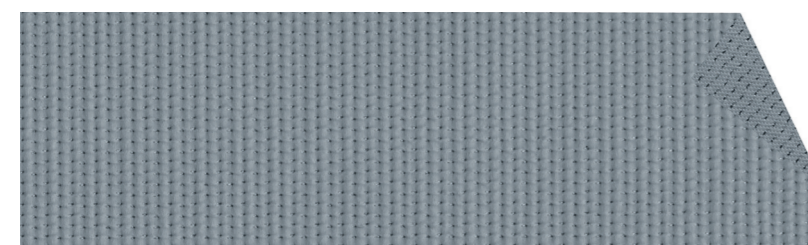
SUNWORKER
Ordering code:
SWK + colour ref + width



SUNWORKER METAL
Ordering code:
SWM + colour ref + width



SUNWORKER OPAQUE
For a total darkness
Ordering code: SWO + colour ref



SUNWORKER CRISTAL
A translucent fabric with maximum
waterproof protection
Ordering code: SWC + colour ref

SUNWORKER: For all types of uses

	Vertical roll-down awnings	Folding-arm awnings	Window and veranda awnings	Projection awnings	Shade sails & tensile structures	Pergolas	Vertical strips
SUNWORKER and SUNWORKER METAL	✓	✓	✓	✓	✓	✓	✓
SUNWORKER OPAQUE	✓		✓	✓			✓
SUNWORKER CRISTAL	✓		✓	✓	✓	✓	

Technical Features

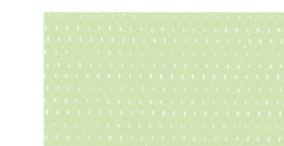
Conform to the RT 2012 requirements

	Weight NF EN ISO 2286-1	Thickness NF EN ISO 2286-3	Tearing Strength In daN/5cm DIN 53363	Tensile Strength In daN/5cm NF EN ISO 13934-1	Acoustic Absorption NF EN ISO 354	Width / Roll length
SUNWORKER and SUNWORKER METAL	330g/sqm	0,40mm	Warp 43 – Weft 22	Warp 220 – Weft 150	Class E	150cm/60m 300cm/30m
SUNWORKER OPAQUE	470g/sqm	0,45mm	Warp 50 – Weft 40	Warp 250 – Weft 160	Not rated	145cm/30m
SUNWORKER CRISTAL	455g/sqm	0,50mm	Warp 58 – Weft 30	Warp 265 – Weft 172	Not rated	137cm/30m

Fire Resistance
M1 (NF P92503), B1 (DIN 4102), C1 (UNI 9176),
Classe 1 (UNE-EN 13773 :2003)
Euroclass
B s2 d0 (EN 13501-1)
Guarantee 5 years
Temperature for use
-30°C to +70°C / -22°F to 158°F
Cleaning soapy water

SUNWORKER: Brilliant colours

To enable you to fully express your creativity, all Sunworker fabrics can be printed on



SWK M525 Mint



SWK M567 Green



SWK M238 Blue



SWK M228 Marine



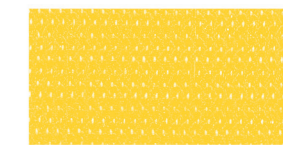
SWK M711 Champagne



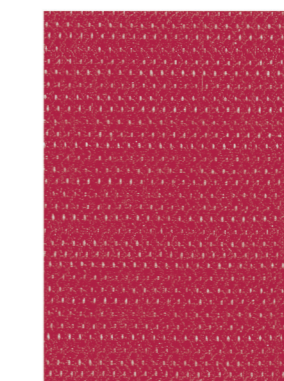
SWK M713 Sand



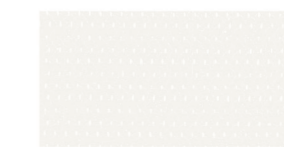
SWK M709 Corn



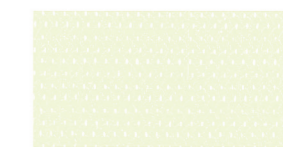
SWK M309 Yellow



SWK M927 Red



SWK M005 White



SWK M710 Creme



SWK M712 Beige



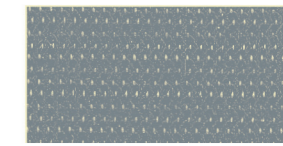
SWK M838 Burgundy



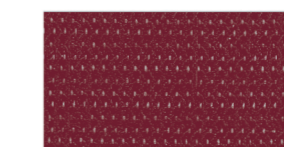
SWK M654 Grey



SWK M653 Iron



SWK M652 Silver



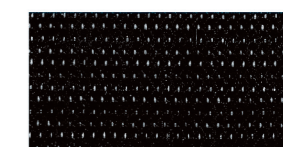
SWK M392 Charcoal



SWK M393 Bronze



SWK M391 Black



SWK M391 Black

- Colours also available in Sunworker Metal
- Colours also available in Sunworker Opaque
- Colours also available in Sunworker Cristal